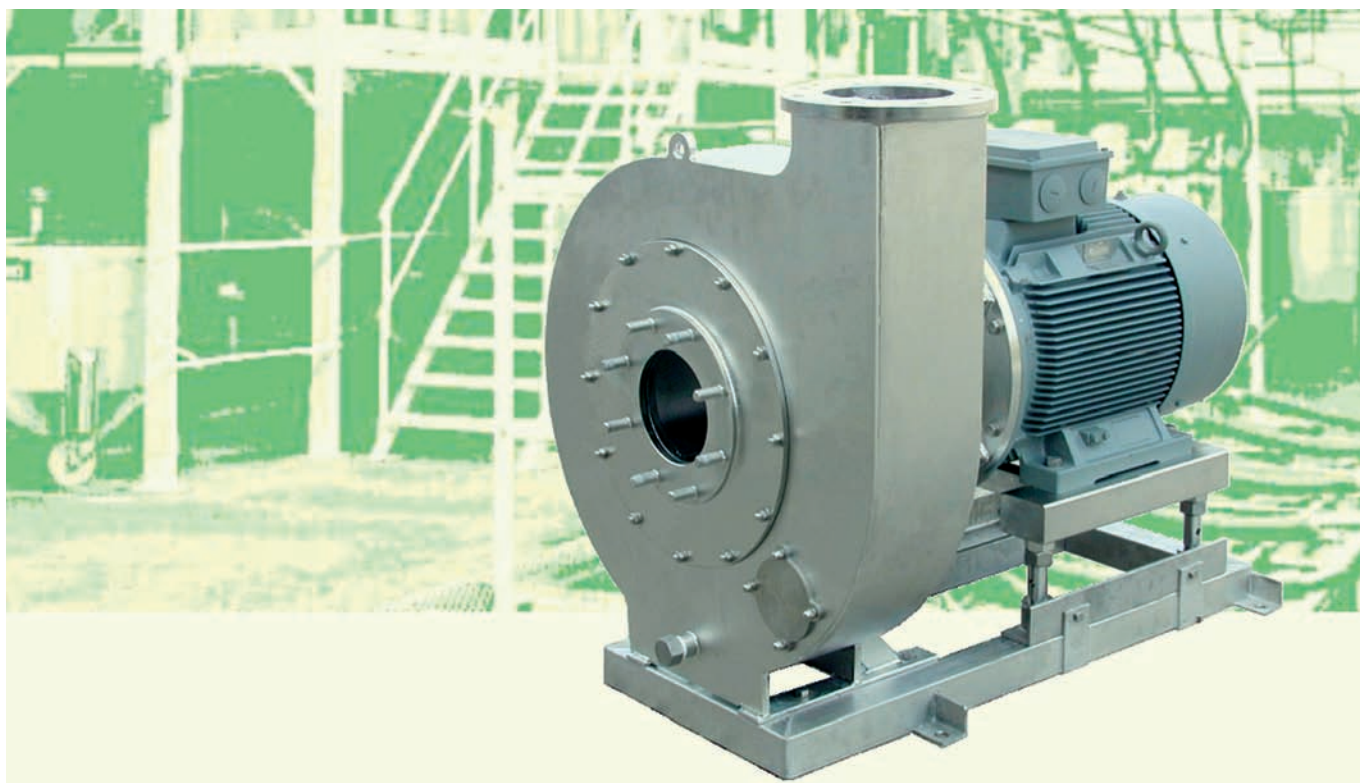


Stainless steel channel impeller pump

FOR THE VEGETABLE INDUSTRIES



The VDKM pumps are especially designed to handle solid particles gently in water, like vegetables, fruit, shrimps, mussels, potatoes... The pumps are made of stainless steel and are electropolished, this means as to hygiene (HACCP) and corrosion resistance they guarantee pure pumping of your food products. The pump production takes place at the ISO 9001-certified Packo plant in Diksmuide, Belgium.

SERIES VDKM

Construction

SERIES VDKM

Double channel impeller pump, especially adapted to pump fragile foods (e.g. vegetables)

Resistant to corrosion and no sharp corners or steps

Maintenance free and resistant to corrosion.
Free from bacteria traps and perfectly cleanable (HACCP). No risk of rust in the water.

Pump parts in stainless steel, electropolished.

It is possible that product residue can be washed away without opening the pump.

Possible by injection of pure water in the seal cavity.

Compact construction. Ultimate speed control by the use of a frequency converter that can be supplied, ready-built into the motor, or built into your own control panel.

Monobloc standard motor IEC.

Strong and wear-resistant shaft.

Shaft in duplex.

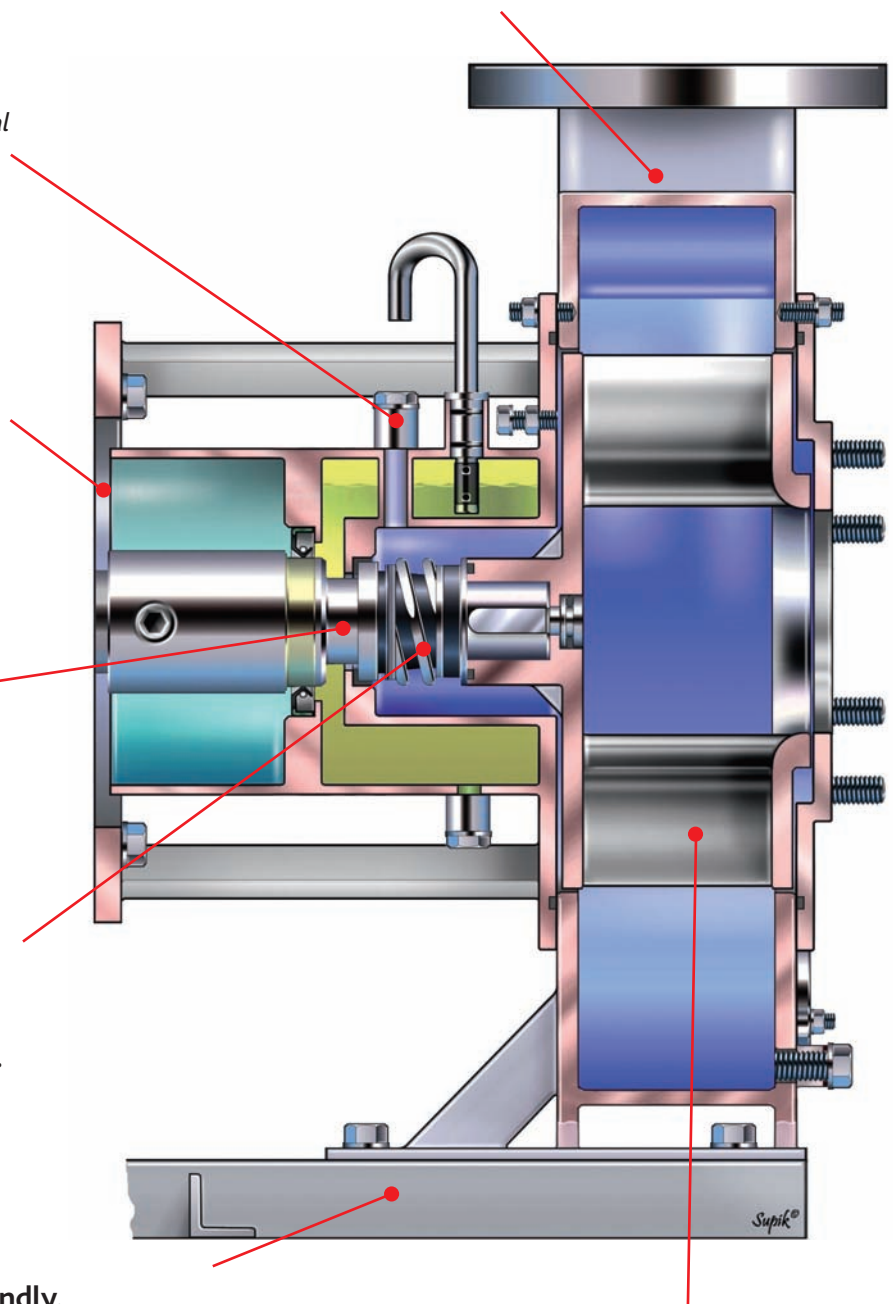
Wear-resistant, leak proof and reliable mechanical seal. The mechanical seal is a standard product and available world-wide.

Mechanical seal in oil bath.

Maintenance-friendly.

Base plate and frame in stainless steel. For 150-400 and 200-500: the sledge construction makes it possible to inspect the impeller and the mechanical seal easily without having to disassemble the pump casing.

Free of vibrations and constant flow without damaging your product. Due to the double channel impeller that is dynamically balanced.



HACCP

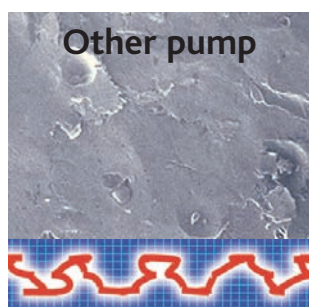
Rust proof and simple for cleaning

✓ All stainless steel parts are electropolished

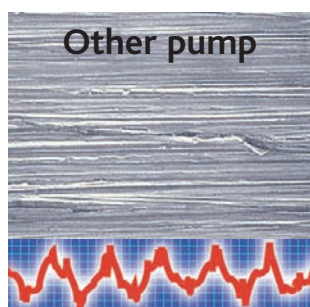
Electropolishing leads to extremely low microroughness, resulting in a substantially increased resistance to the adhesion of products. The result: **excellent ease of cleaning**. The pictures illustrate clearly that a mechanically polished or glass blasted surface shows a much higher microroughness with an increased risk of bacteria. (HACCP)

Electropolishing also leads to an increased **corrosion resistance** due to the higher percentage of chromium and nickel at the surface. This means no more rust water in your installation.

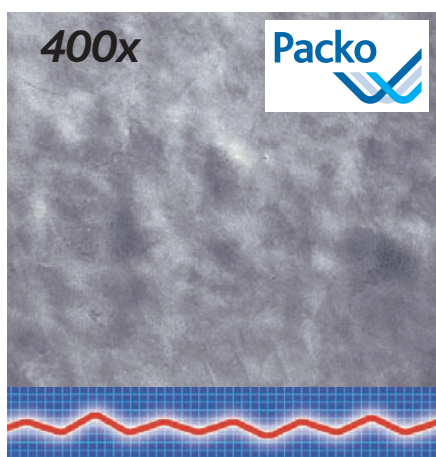
Also the internal tension concentrations are solved, which reduces the possibility of tension corrosion strongly.



Glass blasted



Mechanical polishing
240 grit



Electropolished

Easy maintenance

A unique **sledge construction** makes it possible to slide the motor + impeller easily backwards, which means the pump casing and the pipes do not have to be disassembled in case of possible replacement or inspection of the impeller or mechanical seal.



Inspection trap

Standard on
400 & 500 series



Oil level check

and

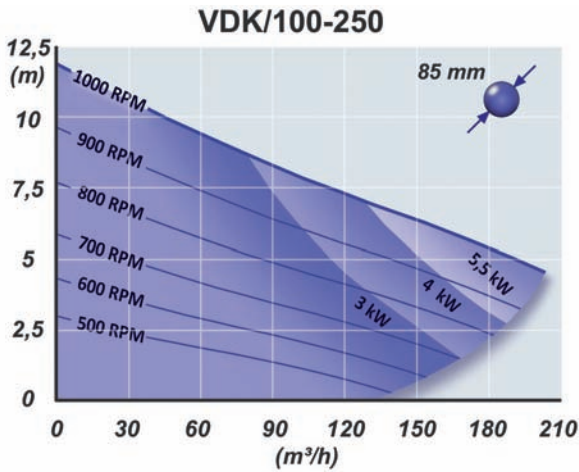
flush connection:

possibility of water injection to flush the seal cavity.



Range of application

SERIES VDKM



Hygienic transport of solid foods without damage

Due to its large free passage and its soft pumping action the VDK pump is very suitable to pump complete or cut **vegetables** like beans, peas, carrots, cucumbers, cabbage, maize, onions etc, **marine products** like cockles, mussels etc and **fruit** like apples, pears, cherries etc.

Space saving. The VDK pump makes it possible to realise the transportation of food products through a tube. This is not only more hygienic but also provides a large space saving in comparison with traditional conveyer belts, that can be overloaded which prevents the free transportation passage of products within the company.

