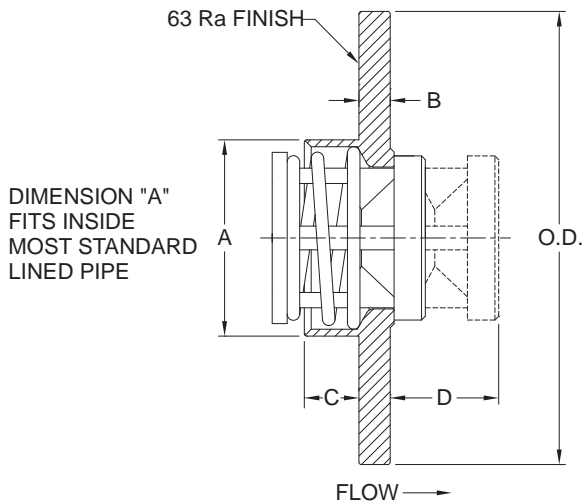


The **Lined Pipe Insert (LP)** valve is designed to mate between two flanges on most lined pipe systems. It provides the simplest and most economical way to install a check valve in a lined piping system. No gaskets are required, just spread the flanges, center the valve and bolt the flanges together. Lined Pipe Insert valves are available in fluoropolymer (PTFE/FEP/PFA) and *Hastelloy*<sup>®</sup> C Alloy to satisfy the most demanding applications. The standard spring material is *Hastelloy*<sup>®</sup> C-276 Alloy. Other materials are available upon request.



Nom. Pipe Size	Size Code	A	B	C		D <sup>①</sup>	OD	Orifice <sup>②</sup> Diameter
				PTFE	HC			
1	H	0.590	1/4	0.26	0.26	0.53	2	0.348
1-1/2	J	1.120	1/4	0.46	0.42	0.78	2-7/8	0.593
2	K	1.570	1/4	0.55	0.44	1.01	3-5/8	1.135
3	M	2.520	5/16	0.78	0.66	1.43	5	1.555 <sup>③</sup>

<sup>①</sup>Maximum nominal dimension for a fully open valve with no spring.

<sup>②</sup>Orifice Diameter for PTFE valve may vary due to molding process.

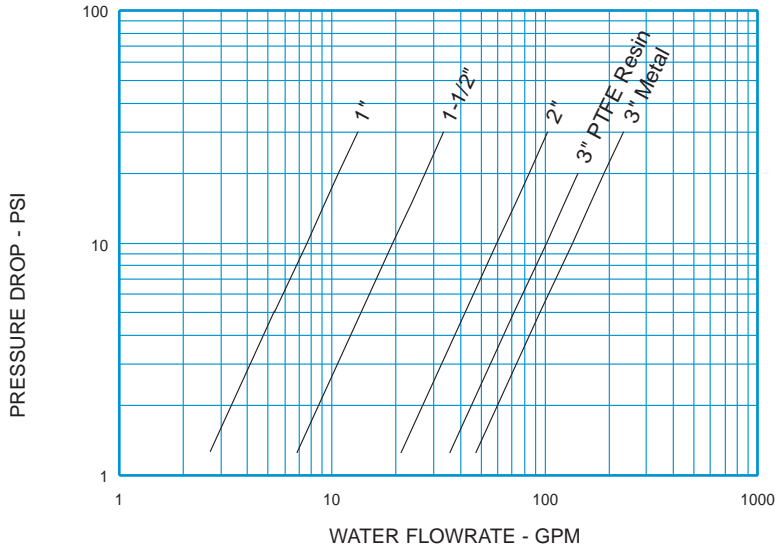
<sup>③</sup>3" PTFE valves use 1.385 Orifice Diameter.

Body Material <sup>④</sup>	Nominal Pipe Size	Non-Shock Pressure-Temperature Rating
<i>Hastelloy</i> <sup>®</sup> C (HC)	1 - 3	ANSI Class 150 & 300
PTFE (TF)	1 - 2	55 PSIG @ 100°F <sup>⑤</sup>
	3	20 PSIG @ 100°F <sup>⑤</sup>

<sup>④</sup>See page 53 for material grade information. Contact the factory for availability of other materials.

<sup>⑤</sup>Consult the factory for reduced P-T rating above 100°F.

**Lined Pipe Insert**  
For Water at 72°F

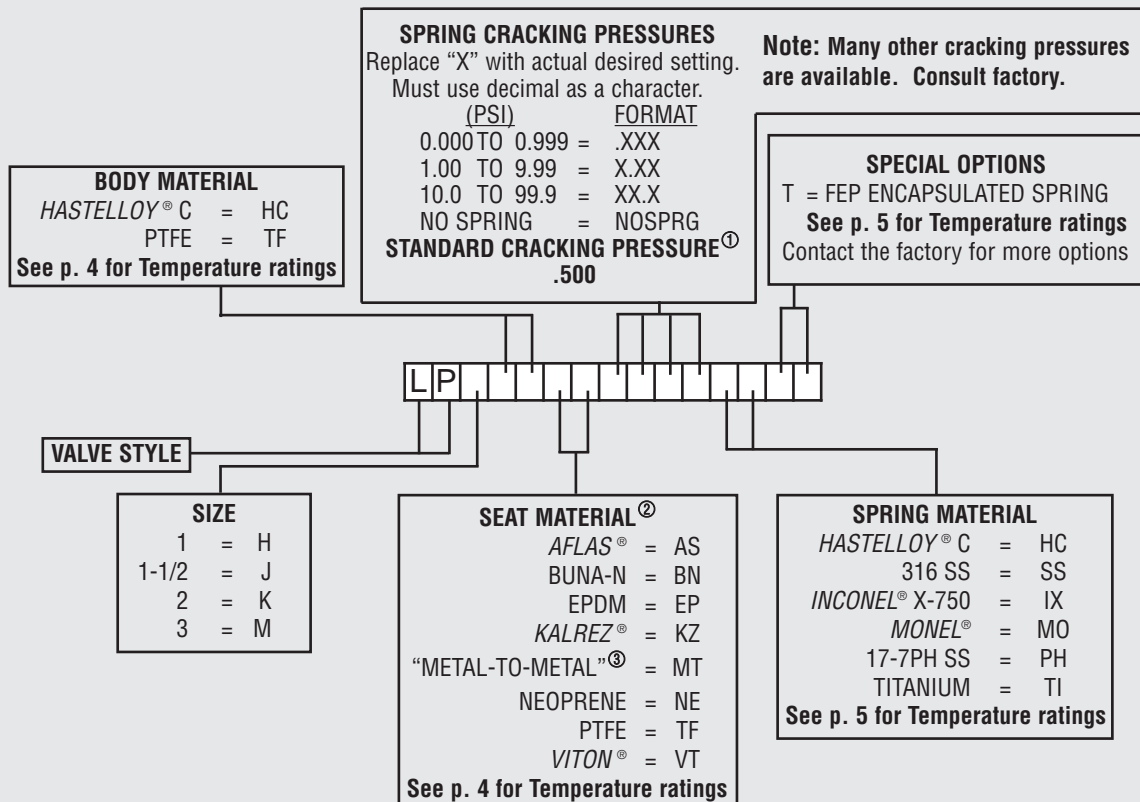


**Note:** All flow curves and Cv values presume the valves are fully open with 1/2 PSI cracking pressure springs. Consult the factory for more information.

STYLE LP (LPI) C <sub>v</sub> VALUES & VALVE WEIGHTS				
METAL C <sub>v</sub>	PTFE C <sub>v</sub>	SIZE	METAL	PTFE
2.4	2.4	1	4.0 oz.	1.0 oz.
6.1	6.1	1-1/2	8.8 oz.	2.2 oz.
18.8	18.8	2	14.4 oz.	3.2 oz.
45.8	32.0	3	2.3 lb.	9.0 oz.

See page 48 for Flow Formulae  
Valve weights are approximate.

**HOW TO ORDER**  
**CHECK-ALL STYLE LP (LPI)**



Listed above are the most common material selections. Please contact the factory for additional options.

- ① Cracking pressure tolerance is +/- 15%.
- ② PTFE seats are not resilient. See page 49 for allowable leakage rates.
- ③ For plastic valves, seat is the same as body.